



JACKWELCH
MANAGEMENT INSTITUTE®
STRAYER UNIVERSITY

PROGRAM GUIDE



TABLE OF CONTENTS

The JWMI difference


Student profile

Our faculty

Our mission: your education

Programs

Admissions



Jack and Suzy Welch founded the Jack Welch Management Institute (JWMI) in 2009. From then until his passing in 2020, Jack was committed to providing an education based on proven best practices and building strong leaders who would make an impact on their industries.

Our top 10 ranked online MBA program runs on a learn today, apply tomorrow philosophy, meaning students can take what they learn and apply it immediately on the job.

JWMI became a part of Strayer University in 2011 and Jack's legacy lives on. His love of learning and passion for winning continue to inspire us to transform the lives of our students.

The JWMI difference



A 12-course MBA that can be completed in **18–36 months**.*



100% online and asynchronous model with flexibility for working adults to earn an MBA on their own time.



Proven leadership lessons and winning business practices from **Jack Welch** and dozens of other current and former CEOs at companies like **Berkshire Hathaway, Boeing, Cleveland Clinic, Home Depot, McDonald's, Medtronic, Walgreens** and more.



A prestigious credential from one of the world's top 10 ranked online MBA programs by **The Princeton Review and Poets&Quants**.



A rigorous, relevant and **real-world curriculum** that you can apply within your workplace to drive results.



Access to a **global network of fellow students** committed to personal and professional growth.



Top 5 Online MBA Program
The Princeton Review



Top 10 Online MBA Program
Poets&Quants

*Final program length will depend on the number of courses taken per quarter and the number of quarters attended per year.

Your MBA. Your terms.

“

The program's asynchronous format worked perfectly. I could do the reading, watch the videos, complete assignments and engage with classmates and the instructor at times that suited my schedule. That flexibility made a significant difference for me.



Kim Meyer

JWMI Class of 2024

Student profile

The opportunity to connect with and learn from fellow students is an integral part of any MBA program.

Matriculated from

49

States*

40

Countries*

57%

Female*

42

Average age*

14%

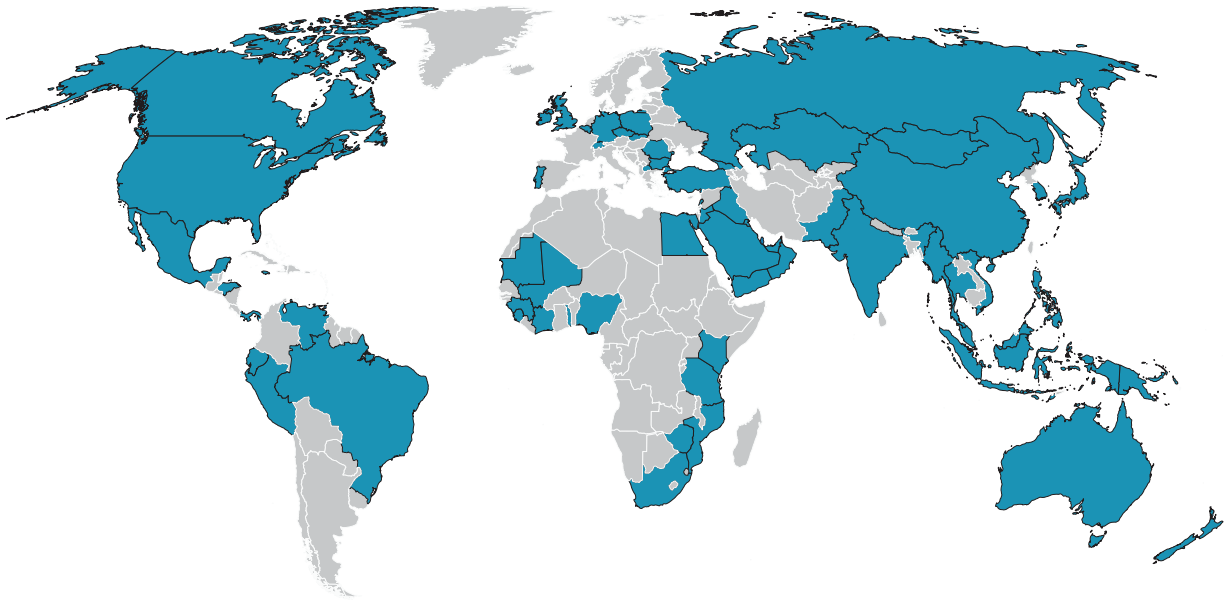
International*

42%

Male*

15

Average years
of experience*



JWMI Connect

JWMI Connect is a thriving network designed to build community outside of the classroom. Students and alumni can find mentors, register for networking events and participate in live, virtual career and industry-specific sessions that are hosted by faculty and guest speakers. They can also access the site's robust alumni directory to make meaningful connections with others in the JWMI community.

*Based on JWMI student profile data as of summer 2024, with 1,701 enrolled students and 4,526 alumni.

In the 2024 Graduate Survey*:

98%

of alumni rated their
overall experience in
the program good or
excellent

98%

of alumni would
recommend the
program to others

90%

of alumni said their
confidence as a leader
has increased

*Based on 2024 Graduate Survey Responses. 518 JWMI students were surveyed with 505 survey respondents.

Our faculty

Passionate practitioners hand-selected from some of the top companies in the world to help you achieve your professional potential.

At JWMI, we value practical business experience, not just academic credentials.

Our faculty are selectively chosen for their drive to engage, challenge and excite students every day. They are current and former leaders with an average of 20 years of professional experience, and the majority hold a PhD or terminal degree in their field of expertise.

This level of excellence has earned them top 10 rankings by our alumni in Poets&Quants Best Online MBA Programs.



Our faculty have practical experience from some of the world's most recognizable brands, including Allstate, AT&T, Deloitte, Exxon Mobil, Ford, Huffington Post, Johnson & Johnson, Morgan Stanley, National Football League Properties, United Healthcare and Walmart.

Our mission: your education

The mission of JWMI at Strayer University is to transform the lives of our students by giving them the tools they need to become better leaders, build great teams and help their organizations win.

This mission drives everything we do, and we live it every day in our courses. Each of our programs leverages practical, real-world experience and prepares graduates to help revolutionize their companies and careers.

Master of Business Administration (MBA) programs

- JWMI MBA
- JWMI MBA AI Leadership Concentration
- JWMI MBA Healthcare Concentration
- JWMI MBA Human Resources Concentration
- JWMI MBA Operations Management Concentration

Certificate programs

Graduate certificates

- JWMI Graduate Certificate in Artificial Intelligence
- JWMI Graduate Healthcare Certificate
- JWMI Graduate Human Resources Certificate
- JWMI Graduate Leadership Certificate
- JWMI Graduate Operations Management Certificate

Executive certificates

- JWMI Executive Business Communications Certificate
- JWMI Executive Finance Certificate
- JWMI Executive Leadership Certificate
- JWMI Executive Strategy Certificate

The Jack Welch Management Institute at Strayer University does not represent or guarantee that its degree programs are accredited, recognized, or likely to be accredited, recognized, or granted equivalency or validation by any non-U.S. country, non-U.S. educational authority, or any other educational institution. Recognition, equivalency, and validation of JWMI degrees are determined on a country-by-country basis by each country's educational authorities, and by each individual institution at which students seek equivalency. You are advised to independently review the degree recognition, equivalency, and validation procedures with the relevant organizations in your country and any other institution you may consider attending to determine if JWMI credits/degrees would be recognized.

JWMI MBA

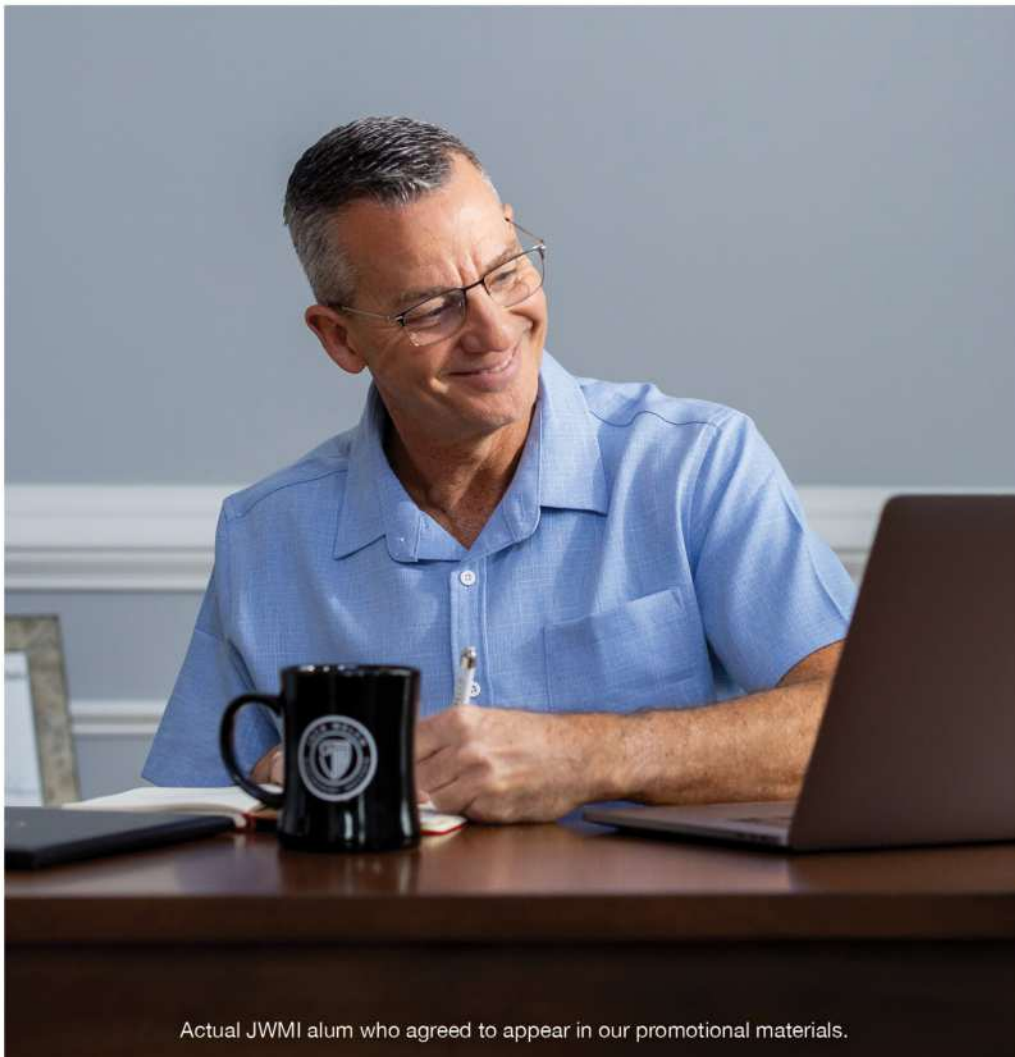
12

core MBA
classes

Built on a practical foundation, our top 10 ranked online MBA offers an applicable, real-world curriculum that is structured to help you gain the confidence and knowledge needed to execute with a CEO mindset.

Earning a JWMI MBA can provide a firm academic grounding in leadership strategy, marketing and finance. Each course is infused with Jack's winning philosophy on leadership development, people management and more.

Our MBA is suited for professionals who want a comprehensive experience that can be applied to any industry and at any career stage.



Actual JWMI alum who agreed to appear in our promotional materials.

**Business
Communications and
Executive Presence**

**Leadership in the 21st
Century**

Managerial Economics

**Marketing in a Global
Environment**

People Management

Financial Management I

Financial Management II

Strategy

Operational Excellence

**Organizational Change
and Culture**

**New Business Ventures
and Entrepreneurship**

**Business Analytics and
Capstone**

9

core MBA
classes

**Business
Communications &
Executive Presence**

**Leadership in the 21st
Century**

**Marketing in a Global
Environment**

People Management

Financial Management I

Financial Management II

**Organizational Change
& Culture**

**New Business Ventures
& Entrepreneurship**

**Business Analytics and
Capstone**

3

AI-focused
classes

**The Business of AI:
Navigating the Digital
Economy**

**Harnessing AI
for Performance
Optimization**

**Applying AI Strategies to
Win in Business**

JWMI MBA AI Leadership Concentration

Gain your competitive edge using the latest Artificial Intelligence (AI) innovations.

AI is transforming the business world. With the JWMI MBA AI Leadership Concentration, you'll learn how to integrate AI with business acumen to help your organization get ahead and stay ahead.

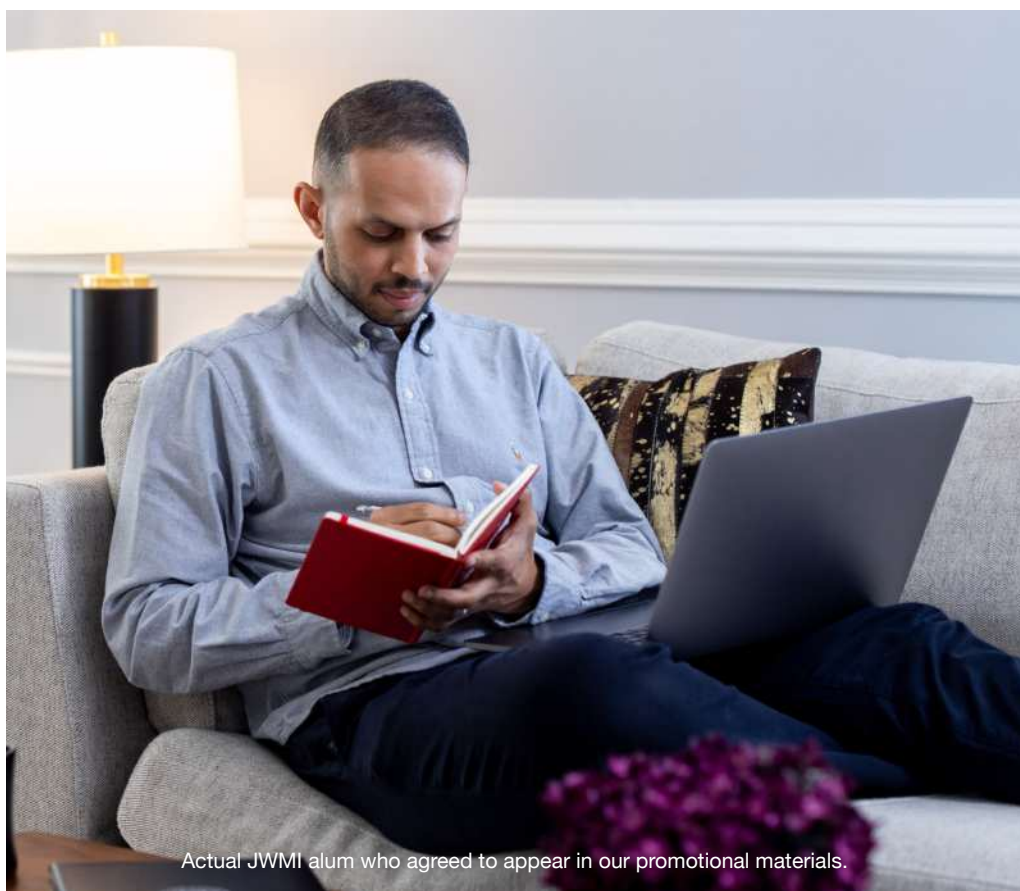
Master the use of AI techniques to foster innovation and disrupt traditional business models. Drive positive change through strategic AI use and leverage AI to collect, analyze and interpret data for informed decision-making.



Actual JWMI employee who agreed to appear in our promotional materials.

JWMI MBA Healthcare Concentration

Healthcare systems face unprecedented complexity – rising costs, economic inefficiencies, changing technologies and increased regulation. The JWMI MBA Healthcare Concentration provides leadership and business skills through our core MBA curriculum in operations, finance and technology, plus the policy tools needed to navigate today's ever-changing healthcare environment.



Actual JWMI alum who agreed to appear in our promotional materials.

The Jack Welch Management Institute at Strayer University does not represent or guarantee that its degree programs are accredited, recognized, or likely to be accredited, recognized, or granted equivalency or validation by any non-U.S. country, non-U.S. educational authority, or any other educational institution. Recognition, equivalency, and validation of JWMI degrees are determined on a country-by-country basis by each country's educational authorities, and by each individual institution at which students seek equivalency. You are advised to independently review the degree recognition, equivalency, and validation procedures with the relevant organizations in your country and any other institution you may consider attending to determine if JWMI credits/degrees would be recognized.

8

core MBA
classes

**Business
Communications and
Executive Presence**

**Leadership in the 21st
Century**

Managerial Economics

**Marketing in a Global
Environment**

People Management

Financial Management I

Strategy

**Organizational Change
and Culture**

4

healthcare-
focused
classes

**Saving Money, Saving
Lives**

It's All About the Patient

**Leading Through
the Bureaucracy in
Healthcare**

**Healthcare Informatics/
Healthcare Capstone**

BEGIN YOUR APPLICATION | VISIT [APPLICATION.JWMI.COM](https://www.application.jwmi.com)

9

core MBA
classes

Business
Communications &
Executive Presence

Leadership in the
21st Century

Marketing in a Global
Environment

Financial Management I

Financial Management II

Strategy

Operational Excellence

New Business Ventures
and Entrepreneurship

Business Analytics
& Capstone

3

human
resources-
focused
classes

Recruit, Develop,
Assess, Reward, Retain

Strategic Partnering
With The C-Suite

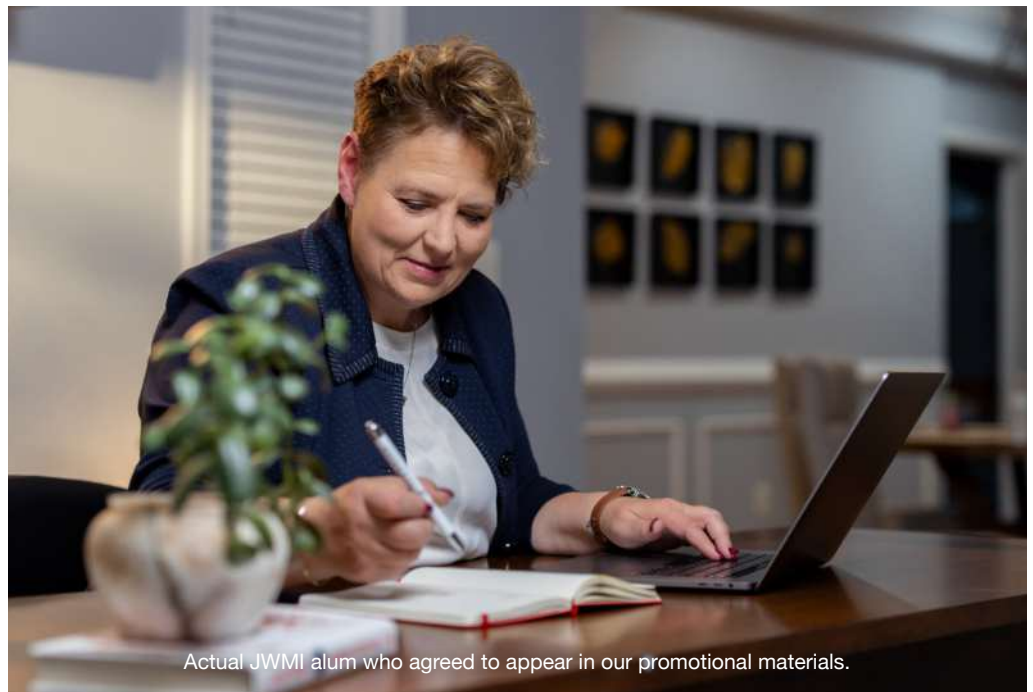
Leading Change By
Putting People First

JWMI MBA Human Resources Concentration

HR is about building great teams and great companies through consistency, transparency and candor. The SHRM®-aligned JWMI MBA Human Resources Concentration combines the leadership and business skills from our core MBA curriculum with essential talent management practices needed to transform today's HR leaders into strategic drivers of organizational success.

The Society of Human Resource Managers (SHRM) has reviewed this program and acknowledged that it aligns with its curriculum guidelines for human resource degrees. SHRM is the largest and most widely recognized human resource professional organization in the world.

While the program curriculum covers much of the content of the Professional in Human Resources (PHR) and Senior Professional in Human Resources (SPHR) certification exams, the program does not specifically prepare students to take the exams nor does completion of the program guarantee any SHRM certification



Actual JWMI alum who agreed to appear in our promotional materials.

JWMI MBA Operations Management Concentration

Today's competitive corporate landscape requires leaders who can remove bureaucracy and complexity to maximize efficiency and productivity. The JWMI MBA Operations Management Concentration delivers practical leadership skills, focusing on the analytical and quantitative tools needed to optimize processes and reduce costs, improve quality and create a competitive advantage.



Actual JWMI alum who agreed to appear in our promotional materials.

The Jack Welch Management Institute at Strayer University does not represent or guarantee that its degree programs are accredited, recognized, or likely to be accredited, recognized, or granted equivalency or validation by any non-U.S. country, non-U.S. educational authority, or any other educational institution. Recognition, equivalency, and validation of JWMI degrees are determined on a country-by-country basis by each country's educational authorities, and by each individual institution at which students seek equivalency. You are advised to independently review the degree recognition, equivalency, and validation procedures with the relevant organizations in your country and any other institution you may consider attending to determine if JWMI credits/degrees would be recognized.

8

core MBA
classes

Business
Communications and
Executive Presence

Leadership in the 21st
Century

Managerial Economics

People Management

Financial Management I

Financial Management II

Strategy

Operational Excellence

4

operations-
focused
classes

Getting Your Customers
What They Need

Delivering Quality

Leading Operational
Change

Operations Capstone

Certificate programs

Graduate certificates

Upgrade your skills and knowledge base with graduate-level programs. Each of our four certificate options may be completed after nine months* and will help you build credentials quickly and gain competencies that can be put into action immediately.

Students can apply credits earned towards the corresponding JWMI MBA program.

THE DETAILS

Format

Self-paced, MBA-level programs with required weekly milestones.

Program cost

\$12,000 (\$4,000 per course). Scholarships are available to qualifying students.

Total program length

9 months, 3 courses

Individual course length

10 weeks

Time commitment

10–15 hours per week

Class size

15–20 students

Admissions requirements

Students must meet JWMI MBA admissions requirements.

Graduate certificate programs

The **Graduate Leadership Certificate** will help you hone leadership skills as you learn the techniques and practices often reserved for C-suite executives, like the ability to energize and empower people and the ability to manage conflict and align your team. You'll become a better coach, a better communicator and most importantly, a game-changing leader.

The **Graduate Certificate in Artificial Intelligence** will help you leverage AI to become a great leader in business. You'll learn how to ethically and effectively use the cutting-edge technology to drive innovation, boost operational efficiency and steer your organization to success.

The **Graduate Healthcare Certificate** offers specialized skills you can use to strategically solve complex problems within the healthcare industry. You'll learn to develop healthcare management strategies, effectively communicate policies, practices and procedures, and apply Six Sigma principles throughout healthcare companies.

The **Graduate Human Resources Certificate** will help you identify and retain resources, build careers and help forge the kinds of teams that change lives and companies. Learn strategies for retaining and rewarding top talent, managing confidentiality, conflict and power struggles, and using candor to coach and navigate tough employment relationships.

The **Graduate Operations Management Certificate** will help you quickly develop the knowledge and skills needed to analyze and optimize performance. Maximize your company's efficiency and productivity through tools that can be used to optimize supply chain management, logistics, process improvement, quality management and operational leadership.

*Final program length will depend on the number of courses taken per quarter and the number of quarters attended per year.

Executive certificates

Our executive certificates are short, non-credit programs that allow students to quickly gain knowledge and skills in a particular area of study across four subjects.

These six-week programs are designed to equip you with the management skills you need to think smarter, act faster and win in the workplace. Swiftly broaden your perspectives and obtain a powerful credential that will set you and your resume.

THE DETAILS

Format

Self-paced with weekly milestones.

Cost

\$1,800

Program length

6 weeks

Time commitment

3–5 hours per week

Class size

Fewer than 25 students

Admissions requirements

None

Executive certificate programs

The **Executive Leadership Certificate** explores ways to hire, motivate, coach and inspire people with confidence. Learn to avoid common mistakes made by many managers, while developing the leadership skills needed for today and tomorrow.

The **Executive Strategy Certificate** will help you develop a winning strategy to guide decisions and actions. You'll learn Jack Welch's renowned "5-step" strategy on how to assess market dynamics, analyze growth sources and build sustainable competitive advantages while adding valuable skills to your strategic toolbox.

The **Executive Business Communications Certificate** will help you learn to inform, persuade and engage for maximum impact. With a focus on the management of people and organizations, you'll study techniques for improving verbal and written communication, with an emphasis on the importance of candor and transparency – two skills that are critical to winning.

The **Executive Finance Certificate** will expose you to the principles of corporate finance as you learn the fundamental techniques needed to build a business case, manage costs and implement financial controls.

The Jack Welch Management Institute at Strayer University does not represent or guarantee that its degree programs are accredited, recognized, or likely to be accredited, recognized, or granted equivalency or validation by any non-U.S. country, non-U.S. educational authority, or any other educational institution. Recognition, equivalency, and validation of JWMI degrees are determined on a country-by-country basis by each country's educational authorities, and by each individual institution at which students seek equivalency. You are advised to independently review the degree recognition, equivalency, and validation procedures with the relevant organizations in your country and any other institution you may consider attending to determine if JWMI credits/degrees would be recognized.

JWMI admissions

Our admissions officers are eager and ready to assist you. Along with your dedicated academic advisor, they'll be with you throughout your JWMI MBA journey to ensure that you are successful in the program and beyond.

Quarterly term starts

January
April
July
October

Applicants to the JWMI MBA program are required to provide:

- Proof of completion of a United States baccalaureate degree from an accredited institution, or approved equivalent.
- A 3.0 undergraduate grade point average (GPA) on a 4.0 scale.
- GMAT or GRE taken within five years prior to enrollment – automatically waived with five years of professional experience.
- A completed application and enrollment agreement, as applicable.
- A valid current government-issued photo identification.
- Resume or LinkedIn profile.
- Personal essay.
- In addition to the above, special consideration may be given to applicants who do not meet minimum GPA requirements but show graduate potential and have a minimum of ten years of professional or business experience. A personal interview with the dean is required.

Accreditation



ACBSP is known for having the highest standards of excellence in accreditation. Many employers only recognize and pay for ACBSP accredited business degrees.

Every business degree programs in Strayer's College of Business, including the JWMI MBA, are programmatically accredited by the ACBSP. (Accreditation Council for Business Schools and Programs 11520 West 119th Street, Overland Park, KS 66213, 913-339-9356). www.acbsp.org



Strayer University is an accredited institution and a member of the Middle States Commission on Higher Education (MSCHE or the Commission) www.msche.org. Strayer

University's accreditation status is Accreditation Reaffirmed. The Commission's most recent action on the institution's accreditation status on June 22, 2017 was to reaffirm accreditation. MSCHE is recognized by the U.S. Secretary of Education to conduct accreditation and pre-accreditation (candidate status) activities for institutions of higher education including distance, correspondence education, and direct assessment programs offered at those institutions. The Commission's geographic area of accrediting activities is throughout the United States.

The Jack Welch Management Institute at Strayer University does not represent or guarantee that its degree programs are accredited, recognized, or likely to be accredited, recognized, or granted equivalency or validation by any non-U.S. country, non-U.S. educational authority, or any other educational institution. Recognition, equivalency, and validation of JWMI degrees are determined on a country-by-country basis by each country's educational authorities, and by each individual institution at which students seek equivalency. You are advised to independently review the degree recognition, equivalency, and validation procedures with the relevant organizations in your country and any other institution you may consider attending to determine if JWMI credits/degrees would be recognized.

Strayer University is certified to operate in Virginia by SCHEV and has many campuses, including at 2121 15th St. N. in Arlington, VA.

Ways to afford your MBA

Military tuition assistance and veteran education benefits

Military tuition assistance for U.S. service members can be utilized along with our veterans' scholarship. When combined, a majority of your graduate tuition can be covered. Veterans and spouses and dependents of Veterans who qualify for VA education benefits can use their benefits to cover their tuition. Our military admissions officers and business office advisors can answer your VATA education benefit questions.

Scholarships

JWMI offers scholarships ranging from \$3,000 to \$23,100. Connect with an admissions officer to learn more about your options.

Employer tuition assistance

You may be able to save on tuition through your employer. Call 855-596-5964 or email information@jwmi.com for more information.

Financial aid

There are a number of loans available to qualifying students through federal financial aid. Visit <https://studentaid.gov> to find out if you qualify for federal financial aid. When completing your application, use Strayer Federal School Code 001459.

Payment plans and options

JWMI offers flexible payment options for students electing to fund their education on their own. You can pay using a credit card, debit card or a simple monthly payment plan.



Contact us

To begin your application, visit application.jwmi.com. Contact an admissions officer at [1-855-596-JWMI \(5964\)](tel:1-855-596-JWMI) or via email at information@jwmi.com if you have any questions.



Top 10 ranked online MBA

WWW.JWMI.COM

The Jack Welch Management Institute is part of Strayer University.
Strayer University is certified to operate in Virginia by SCHEV and has many campuses, including at 2121 15th St. N. in Arlington, VA.